



## INSTALLATION GUIDE

---

# PASSIVE PURPLE® INTERNAL BRUSH | 2025/26



## 1. Area of use:

Passive Purple® Brush is a high technology fibre reinforced polymer emulsion applied with a paintbrush for use in buildings on:

- Joist zones
- DPC zones
- Window formers
- Wall to ceiling connections
- Floor to wall connections
- Wall to wall connections
- Pipe penetrations
- Curtain walls
- Wall/ceiling/floor touch ups for surface sealing

## 2. System:

Passive Purple® Brush is a VOC free, polymer-based putty like substance that is applied with a paintbrush and dries to form an airtight flexible coating with excellent adhesion on different substrates. This product is ready-to-use and can be applied in any direction and on any substrate including concrete, masonry, plaster/render, engineered wooden boards, tapes, membranes, aluminum, steel, PVC, PIR Insulation, foams, timber, blockwork.



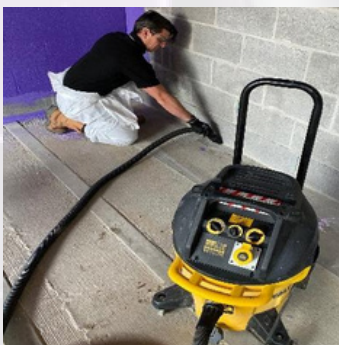
Joist connection in masonry wall using Airtight White Brush.



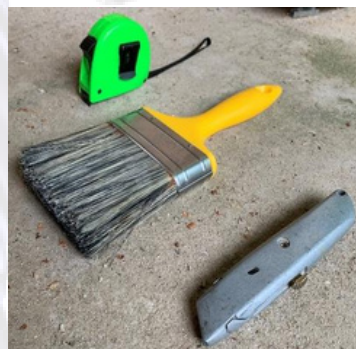
Wall to ceiling connection using Passive Purple Brush.

## 3. Materials and tools commonly used:

- Stanley Knife, bag for waste.
- Masking tape.
- Vacuum cleaner (also for removing standing water).
- Non-shrink polyurethane foam and Passive Purple® Brush.
- Empty buckets, water for cleaning of tools.
- Products: Passive Purple® Brush, 3" paintbrush.
- Surface temperature meter, substrate must not be below 5°C.
- Personal safety equipment: Safety glasses, gloves, overalls, and masks.



Clean all areas.



Tools you will need.



Passive Purple Brush- Airtight White Edition.

#### 4. Individual protection:

Consult the Materials Safety Data Sheet prior to application. Although VOC FREE - Always work in well-ventilated areas. Avoid direct skin contact when product is in wet condition. You are advised to wear eye protection, glasses, gloves, overalls, mouth mask, gloves, and safety wear during application.



Gloves



Face fit mask



Goggles

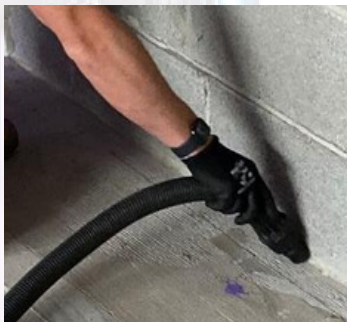


Spray suit

#### 5. Inspection and preparation:

**The successful sealing of Passive Purple® Brush depends on the thorough preparation of the substrate. The following preparation instructions need to be followed.**

- Standing water, dust and free particles are removed with the vacuum cleaner. Passive Purple® Brush may be applied to humid surfaces.
- Remove also other types of surface pollutions that could diminish adhesion.
- Fill holes and joints over 7-10mm with a fast setting cement-based product or polyurethane foam.
- Apply Passive Purple® Brush to connections such as at between the wall and damp course or joints and penetrations on the OSB/MGO or blockwork.



Vacuum all debris.



Passive Purple Brush applied to wood fibre.

## 6. Application:

- Passive Purple® Brush is ready-to-use; stir before use. Do not dilute with water or solvents.
- Apply with a flat paintbrush. Total advised indicative consumption : 0,5 - 1 kg/m2.
- Clean paint brush and other tools with water.
- For joints where movements are expected during the lifetime of the construction, apply Passive Purple®
- Brush over the joint.
- Avoid, during the drying time, contact with any type of water, liquids or other construction product, during the drying process typically allow 24-48 hours to fully dry, (weather dependent).
- Thickness is verified with a wet film thickness gauge, to ensure minimum total coverage of between 500 - 1000 microns. In general, when the substrate is not visible anymore, the coverage of between 500 - 1000 microns is more than likely reached.
- Clean gauge with water, during the drying process, Passive Purple® Brush will change colour from bright purple to a darker purple. Dark purple colour means that, Passive Purple® Brush has dried out and is ready to finish on.
- Lap onto adjoining areas.



Internal brick connections.



Joist connection on to masonry wall.

## 7. Joining with other airtightness systems:

In case of doubt, consult the technical department of Intelligent Membranes®.

If an area to be sealed with Passive Purple® Brush needs to be joined with another area where airtightness is achieved with engineered wooden boards with taped seams, any gap between the two areas needs to be treated as outlined in paragraph 4. If the joint is made between concrete or masonry structures and wooden framed walls or roofs that are subject to shrinking and other movements butyl tape should be provided before final application of Passive Purple® Brush.

## 8. Quality control:

- If required, check visually to ensure complete coverage; If needed, apply an additional coat.
- If required, thickness is verified with a wet film thickness gauge for each layer, to ensure minimum total coverage of 500-1000 macrons.
- If required, this is how you use the wet film thickness gauge: Identify level and smooth patches of the substrate. Select the appropriate side of the thickness gauge for thickness around 500-1000 macrons.



- Press the appropriate side of the gauge into the wet film immediately after application.
- Remove gauge and inspect the underside of the comb fingers. The last wetted finger indicates the wet film thickness value printed by this finger.
- Repeat the measurements to make a reasonable number of spot checks. As a rule of thumb one measurement should be taken for each 5m<sup>2</sup> of coating.
- Clean gauge with water.

## 9. Don'ts :

- Do not apply Passive Purple® Brush on a polluted or dusty substrate.
- Do not dilute Passive Purple® Brush with water or solvents; avoid contact with any type of liquid during drying.
- Do not leave the lid off the container for long periods, please re-seal immediately after use.
- Do not use a heat source at close range to aid drying.
- In case of damage to the Passive Purple® Brush coating after drying, simply restore by cleaning the surface of the coating and re-applying an extra layer which is easily done with the brush version if it gets damaged when drying.
- Do not apply Passive Purple® Brush whilst the substrate is under pressure: pressure testing must only be carried out once Passive Purple® Brush is fully cured.

## 10. Storage:

- Store all containers in a dry frost free environment between 5°C and 35°C, avoid direct sunlight or contact with a heat source.
- Seal part used containers by pushing down firmly in the center of the lid when closing to expel air, ensure lid is closed tightly.
- Do not use product from damaged or broken containers.
- Shelf life: product will keep for 24 months from date of manufacture if kept according to these instructions in unopened containers. See batch number for date of production: ddmmyxx (dd:day/mm:month/y:year/xx:productcode)

## 11. Disposal:

Please refer to product SDS information. Please recycle all used tubs.

## 12. Areas of use:



### Walls:

Fill gaps bigger than 2mm with Passive Purple® Brush. Any gaps greater than 7-10mm, please repair using non-shrink polyurethane foam or mortar.



Timber frame connections.



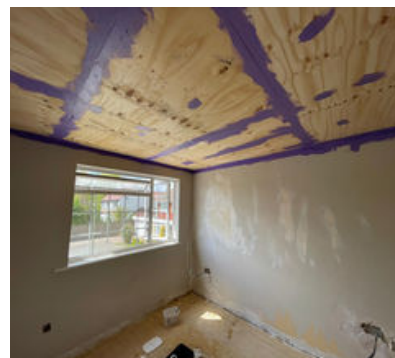
Window former.

### Wall/Ceiling connection :

Fill gaps bigger than 2mm with Passive Purple® brush. Any gaps greater than 7-10mm, please repair using non-shrink polyurethane foam or mortar.



OSB board connections.



Plywood connections.

**Precautions:**

**Consult the Materials Safety Data Sheet and the material compatibility sheet prior to application. Always work in well-ventilated areas. Avoid direct skin contact when product is in wet condition. You are advised to wear eye protection, face mask, gloves, and safety wear during application.**

**Further advice:**

**This advice is based on the experience of the Intelligent Membranes® for further information, please contact our head office. Product sheets, safety data sheets and independent test reports are available on request.**

**Intelligent Membranes®**

**United Kingdom**

**Clopton Farm**

**Croydon**

**Cambridgeshire**

**SG8 0EF**

**INFO@INTELLIGENTMEMBRANES.CO.UK**

**WWW.INTELLIGENTMEMBRANES.COM**

**UK (+44) 01223 208174**

**Canada +1 (613) 927 1011**

**USA +1 (347) 220 8403**



**#NETZERO**

