



INSTALLATION GUIDE

THE GOAT®- FLEXIBLE WATERPROOF
COATING PAINT-7.5 KG | 2025/26



1. Area of use:

The GOAT[®] is a reactive polymer, with quick drying times, and is an innovative solvent-free waterproofing coating. Ideal for:

- Structures in concrete or masonry
- Basement walls
- Basement roofs, foundations, terraces and balconies
- Pipe penetrations

2. System:

Unlike normal paints which need a temperature of 5 degrees or higher, The GOAT[®] can go on damp surfaces on temperatures of 0 degrees. It can handle positive and negative pressure, can be left exposed and it's UV resistant. The GOAT[®] waterproof coating is suitable for both horizontal and vertical applications and can withstand both positive and negative water pressure.



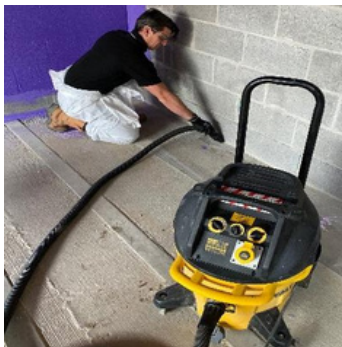
Application on a basement floor



Application around a service penetration

3. Materials and tools commonly used:

- Stanley Knife, bag for waste.
- Masking tape.
- Vacuum cleaner (also for removing standing water).
- Empty buckets, water for cleaning of tools.
- Products: The GOAT[®] 3" paintbrush.
- Surface temperature meter, substrate must not be below 5°C.
- Personal safety equipment: Safety glasses, gloves, helmet, overalls, and masks.



Vacuum all debris.



Tools you will need.



The GOAT[®] 7.5 KG

4. Individual Protection:

Consult the Materials Safety Data Sheet prior to application. Always work in well-ventilated areas. Avoid direct skin contact when product is in wet conditions. You are advised to wear eye protection, safety shoes, overalls, mouth mask, gloves, and safety wear during application.



Gloves



Face fit mask



Goggles

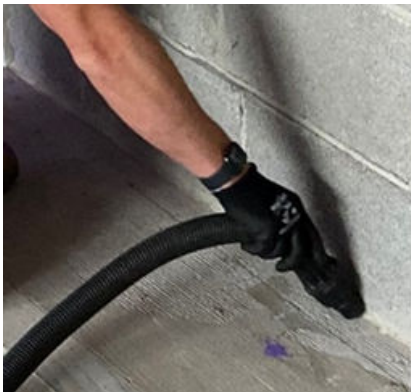


Spray suit

5. Inspection and preparation:

The successful sealing of The GOAT® depends on the thorough preparation of the substrate. The following preparation instructions need to be followed.

- Remove dust, loose parts and standing water from the surface.
- Remove salt efflorescence and other surface contaminants that can affect adhesion.
- If needed, carry out repairs with a fast setting mortar.
- Close water infiltrations with a quick setting mortar plug.
- High pressure cleaning and/or sandblasting is recommended.



Clean all areas.

6. Application

- Open pail and do not mix.
- Do not dilute with water or solvents.
- Apply The GOAT® with a brush for penetrations and crack bridging. Can also be poured into penetrations.
- Total minimal consumption: 2 KG which is 0.500-1000 microns wet thickness. Also verify visually on complete coverage.
- In case of internal applications, allow ventilation for optimal curing.
- Initial setting: 60 mins.
- Final setting: 120 mins.



Patching on a roof



Close up of patching

7. Don'ts

- Do not use in the rain or when rain is expected within the next hour.
- Do not use under 3 degrees or temperatures expecting to drop below 3 degrees or freezing with the next 24-48 hours.
- Do not mix/dilute with water or solvents
- Do not use for anything else other than its intended purpose of a waterproofing. This is a permanent product.
- Do not apply LESS than the guided amount of at least 2kg/m²
- Do not keep outside in cold temperatures/always store in a safe place

8. Storage

Store all containers in a dry frost free environment between 5°C and 35°C, avoid direct sunlight or contact with a heat source.

Seal part used containers by pushing down firmly in the centre of the lid when closing to expel air, ensure lid is closed tightly.

Do not use product from damaged or broken containers.

Shelf life: product will keep for 24 months from date of manufacture if kept according to these instructions in unopened containers. See batch number for date of production: ddmmyxx (dd:day/mm:month/y:year/xx:productcode).

9. Disposal

Please refer to product SDS information. Please recycle all used tubs.

Precautions:

Consult the Materials Safety Data Sheet and the material compatibility sheet prior to application. Always work in well-ventilated areas. Avoid direct skin contact when product is in wet condition. You are advised to wear eye protection, face mask, gloves, and safety wear during application.

Further advice:

This advice is based on the experience of the Intelligent Membranes® for further information, please contact our head office. Product sheets, safety data sheets and independent test reports are available on request.

Intelligent Membranes®

United Kingdom

Clopton Farm

Croydon

Cambridgeshire

SG8 0EF

INFO@INTELLIGENTMEMBRANES.CO.UK

WWW.INTELLIGENTMEMBRANES.COM

UK (+44) 01223 208174

Canada +1 (613) 927 1011

USA +1 (347) 220 8403



#NETZERO

